

Batesford Community Hub, 94 Batesford Rd, Chadstone 3148 Tel: (03) 9832 5855

Email: u3awaverley@gmail.com. Webpage: www.u3awaverley.org.au.

PLEASE EMAIL ALL NEWSLETTER ITEMS AT LEAST 7 DAYS BEFORE THE START OF THE MONTH TO:
erenstrom@optusnet.com.au



PRESIDENT'S REPORT

When I wrote the first President's report for the year, back in late January, I indicated that one of the Committee of Management's greatest concerns was the real possibility that 2020 would see our enrolment numbers exceed 800 for the first time and that the continued growth of U3A Waverley would put increasing strain on our accommodation. I noted that one of our larger classes, Ballroom Dancing, was already meeting offsite at the Notting Hill Community Hall, and the hiring of more facilities was likely in the future with a potentially significant impact on our budget!

Little did I know at that time, what the year would bring! We had barely started when the committee felt it necessary to suspend classes, because of the danger that the newly identified Covid-19 virus may pose to our members. The first lockdown was instituted, followed by the short inter-lockdown period in late May – early June, followed by the longer, more severe, second lockdown. As I write this report the end of the lockdown restrictions are in sight, and a more normal time seems close.

What this means for U3A classes at the Hub and Notting Hill is yet to be determined. By the beginning of February, when classes will return for 2021, it is hoped that all, or nearly all, of the meeting restrictions will be eased to such an extent that most of our classes can function normally or, at least, in a manner which can satisfy most of the members who want to attend them.

We just have to wait, plan for the best outcome, but be prepared for less than an optimum result. Despite all of its challenges, 2020 has had some positive outcomes. Members report being contacted on a regular basis by other class members just to see if they are OK. Tutors have adapted their courses to use communication technologies such as Zoom, Messenger and You Tube to continue their classes, albeit in a modified form, and learnt a whole lot of new skills in the process, and U3As in Victoria have banded together to help each other meet the challenges they face.

We end the year with optimism that in 2021 we will return to meeting each other face-to-face and renew the personal contacts that are such an important part of U3A Waverley.

On behalf of your committee may I wish all of you, your families and friends, the very best for the Christmas season and may 2021 bring all of you all that you need and, maybe, some of what you want!

See you in 2021 – don't forget to re-enrol.

Best wishes

Robert



ENROLMENT 2021 PROCEDURE

Enrollments will open on Tuesday December 1. The Covid virus has even changed this for 2021!

All enrolments must be done **online**.

No enrolments will be made at the Hub.

Members without computers available to them need to have a friend, relative or fellow member to assist them with the enrolment process.

Members who are unable to enrol online will be able to phone designated “**enrolment officers**” who will enrol them on **Monday December 7** between 9.00AM and 1.30PM.

These officers can be phoned on **9832 5855** or **9832 5856**. They **will not** take financial details.

Such members will need to follow the PAYMENTS processes below.

Every member who **enrolls** in courses for 2021 will be placed on **waiting lists**.

This is because of restrictions placed on all indoor events.

All members who enrol and pay their fees by **December 18** will be given first preference for 2021 enrolments in classes for which they were enrolled in 2020.

If there are still vacancies after this process then those who were on the waiting list for the 2020 course will be given the next preference for the 2021 course.

Any remaining vacancies will be filled in the usual process as the restrictions are eased

Course details are in the attached Course Booklet.

PAYMENTS

The membership fee for 2021 is **\$35**.

This fee should be paid by midday **December 18** to best ensure enrolment in the course of your choice.

It is expected that most members who enrol on-line will make the payment of their membership on-line.

Payment can be made through *PayPal* or by *Direct Deposit*. All are encouraged to do so.

1. This can be done in two ways **through PayPal**

Using their PayPal account, OR

Using a credit card (**no PayPal account needed**)

2. **OR** by depositing directly into the **U3A account**: BSB **063151** A/C No. **10075288**

PLEASE ENSURE YOU **INCLUDE YOUR NAME IN THE DETAILS**

For those members who are unable, or unwilling, to use these on-line processes, we will open the U3A building for a payment day. Preparations have been made to use the Multipurpose Room for a payment session on **Wednesday 9 December 2020** from 9.30 till 1.30.

No enrolments will be made in this process, only payments.

Members who do not pay their membership as above will be able to pay during their first week of classes next year, which is from **Monday 1 February 2021**.

TIMELINE	November	30	Committee meeting
	December	1	Enrolments open from 9.00AM
		7	Enrolment officers available 9832 5855 / 9832 5856
		9	Payment session in Multi-Purpose Room - 9.30am - 1.30pm
		18	Preferential enrolments close at midday
	February 2021	1	2021 classes commence

Sent in by Geoff Fitzpatrick this Pam Ayers style poem was written by Jan Beaumont.

Let's All Drink to Lockdown!

I'm normally a social girl
I love to meet my mates
But lately with the virus here
We can't go out the gates.
You see, we are the 'oldies' now
We need to stay inside
If they haven't seen us for a while
They'll think we've upped and died.
They'll never know the things we did
Before we got this old
There wasn't any FaceBook
So not everything was told.
We may seem sweet old ladies
Who would never be uncouth,
But we grew up in the 60s –
If you only knew the truth!
There was sex and drugs and rock 'n roll
The pill and miniskirts
We smoked, we drank, we partied
And were quite outrageous flirts.
Then we settled down, got married
And turned into someone's mum,
Somebody's wife, then nana,
Who on earth did we become?
We didn't mind the change of pace
Because our lives were full
But to bury us before we're dead
Is like red rag to a bull!
So here you find me stuck inside
For 4 weeks, maybe more
I finally found myself again
Then I had to close the door!
It didn't really bother me
I'd while away the hour
I'd bake for all the family
But I've got no flaming flour!
Now Netflix is just wonderful
I like a gutsy thriller
I'm swooning over Idris
Or some random sexy killer.
At least I've got a stash of booze
For when I'm being idle
There's wine and whisky, even gin
If I'm feeling suicidal!
So, let's all drink to lockdown
To recovery and health
And hope this awful virus
Doesn't decimate our wealth.
We'll all get through the crisis
And be back to join or mates
Just hoping I'm not far too wide
To fit through the flaming gates!

I changed my password to "incorrect" so whenever I forget it the computer will say, "Your password is incorrect."

I hate it when people use big words just to make themselves sound perspicacious.

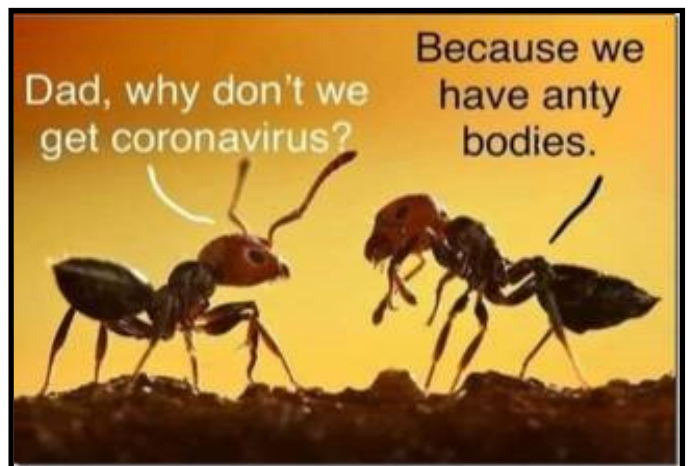
Sent in by Rahif Kattan

**You Know You're
Getting Old When
"Friends With
Benefits", Means
Having Someone Who
Can
Drive At Night.**

A wife invited some people to dinner. At the table, she turned to their six-year-old daughter and said, "Would you like to say the blessing?" "I wouldn't know what to say," the girl replied. "Just say what you hear Mommy say," the wife answered. The daughter bowed her head and said, "Lord, why on earth did I invite all these people to dinner?"



A Sunday school teacher asked her children as they were on the way to church service, "And why is it necessary to be quiet in church?" One bright little girl replied, "Because people are sleeping."



When Grandma decided to unfriend someone.



Courses that will not be resuming next year

Sadly, the timetable for 2021 will have several gaps due to tutors not returning as a result of many factors. Unfortunately, at this stage, the following courses will **not be resuming** next year.

Spanish - Beginners and Intermediates

Egyptian Arabic

Introduction to Italian

Greek - Beginners and Intermediates

Computers

Judaism and the Jewish People

Movies Golden Years

Japanese for Travellers

This is obviously a major impact to our course offerings for next year, and we sincerely thank those tutors for their valuable contribution to the Waverley U3A course program over many years.

All other courses will be returning in 2021 and be subject to class size limits, which will be determined by the restrictions in place at the time.

Please also note that all enrolments for all courses will initially go on a waiting list. This has been done in order to allow members enrolled in courses that were forced to close this year might have an opportunity for priority enrolment next year. It will also provide a mechanism to manage the maximum enrolments due to prevailing Covid restrictions in place at that time.

Whilst we will be suffering a shortage in course offerings next year, this does provide us with an opportunity for any member who has specific knowledge or skills to establish a new course. We would love to hear from you if you feel that your area of knowledge, or expertise, could be of interest to others and you are happy to share it as a new tutor.

The U3A Committee of Management encourages U3A Waverley members to consider participating in this research.

The Nossal Institute for Global Health at the University of Melbourne, Australia is conducting global research into the economic, health and well-being consequences of COVID 19.

HOW ARE YOU GOING? is the only survey, that we are aware of, focused on learning how people are experiencing the pandemic. Aspects like how people are feeling, how optimistic are they about their own future and that of their country, how has their sense of community changed since the onset of the pandemic, ways this crisis has financially impacted their lives and what are they most worried about.

We want as many people as possible to have the opportunity to be involved in this research and would like to connect with U3A Waverley Inc. members to gather their unique experiences of the pandemic. Our online survey will not only help our researchers with the impact of COVID-19 on the economic and overall well-being of individuals, but it will also give your members a voice to share their personal experience.

The participation request is for your members to complete an online survey. The survey will take about 10-15 minutes to complete. There are a few household questions to start, this helps our researchers to identify patterns within populations. Responses are all confidential and respondents cannot be personally identified.

MORE INFORMATION

- [About the survey](#)
- [The project's Plain Language statement](#)
- [About interim findings](#)

This survey and these headings can be found under - <https://mspgh.unimelb.edu.au/how-are-you-going> (Please note because this newsletter is in PDF form you have to actually **type** this into a browser or alternatively you can actually type in Melbourne University study - How are you going?)